

Reactivation of the Sewage Lift Station

This matter first arose back in August 2016 when Mr. Nathan Baggett, P.E. (an engineer with City Utilities) contacted the Kensington Downs Community Association (KDCA) Board of Directors. He wanted to inform us of City Utilities' proposed plan to reactivate the long-abandoned, City-owned, sewage lift station that is located below-ground in the KDCA common area just behind Lot 177 (7302 Bent Willow Drive).

Your KDCA Board members offered considerable "push back" on City Utilities' plan, and after conducting an additional review of the problem, City Utilities Engineering was able to identify a viable, alternative approach. Instead of reactivating the sewage lift station, they would install a new sewage pipeline parallel to the large line that runs through Kreager Park, which is located southeast of KDCA. This alternate plan would have no impact on Kensington Downs. Upon hearing this wonderful news, the KDCA Board thought that all plans to reactivate the sewage lift station had been put to rest.

Now, fast forward about two (2) years ... Nathan Baggett contacted the KDCA Board and informed us that that the issue of reinstating the lift station had been raised again and "is now more of a certainty". We invited Nathan Baggett, and his boss, Anne Marie Smrcek, to attend our September 12, 2018 board meeting so they could present details of City Utilities' plan to the entire KDCA Board of Directors. **This is what we learned -**

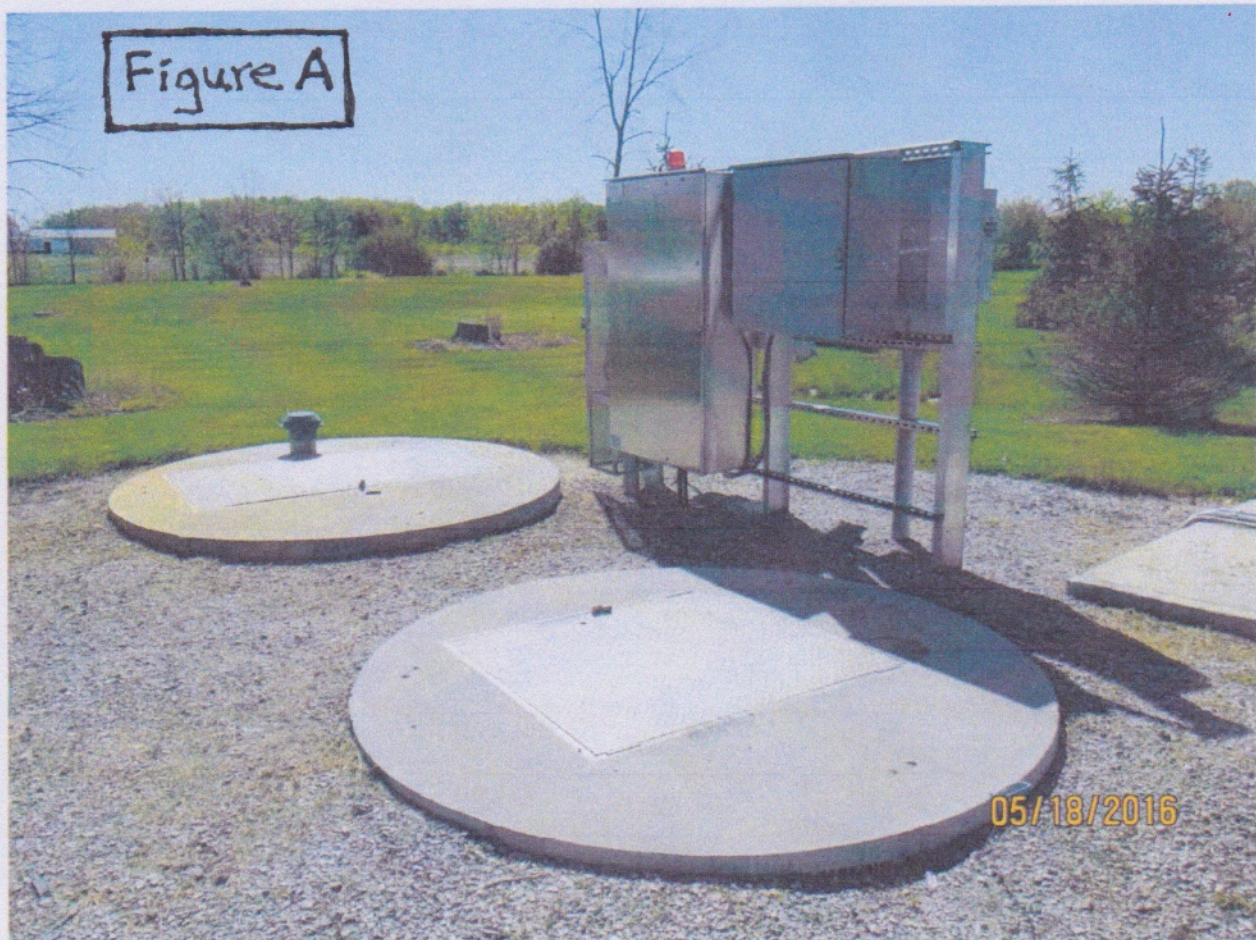
- 1 - City Utilities never implemented the alternate plan that they offered to us back in October 2016 (i.e., installing the parallel sewage pipeline though Kreager Park).
- 2 - City Utilities now tells us that this abandoned sewage lift station must be reactivated to handle the greatly increased sewage loads coming from the Maysville Road area shopping centers and residential developments.
- 3 - The City of Fort Wayne owns the land where the abandoned sewage lift station is located in the KDCA common area. [*Raymond and Viola Goeglein sold this parcel of land to the City on June 2, 1971.*] While we do not know when the sewage lift station was originally built, it is believed that the City abandoned use of this lift station facility sometime in 1985. [*KDCA was established on February 2, 1988.*]
- 4 - **City Utilities Engineering seems intent on reinstating the sewage lift station at this very location, which is right in the heart of our Kensington Downs community.** If City Utilities' plan goes forward, the reactivated lift station will look like this ...

Figure A - The sewage lift station's above-ground structure will consist of two (2) large cement caps raised approximately six (6) inches above ground level, as well as a fairly large electrical panel.

Reactivation of the Sewage Lift Station

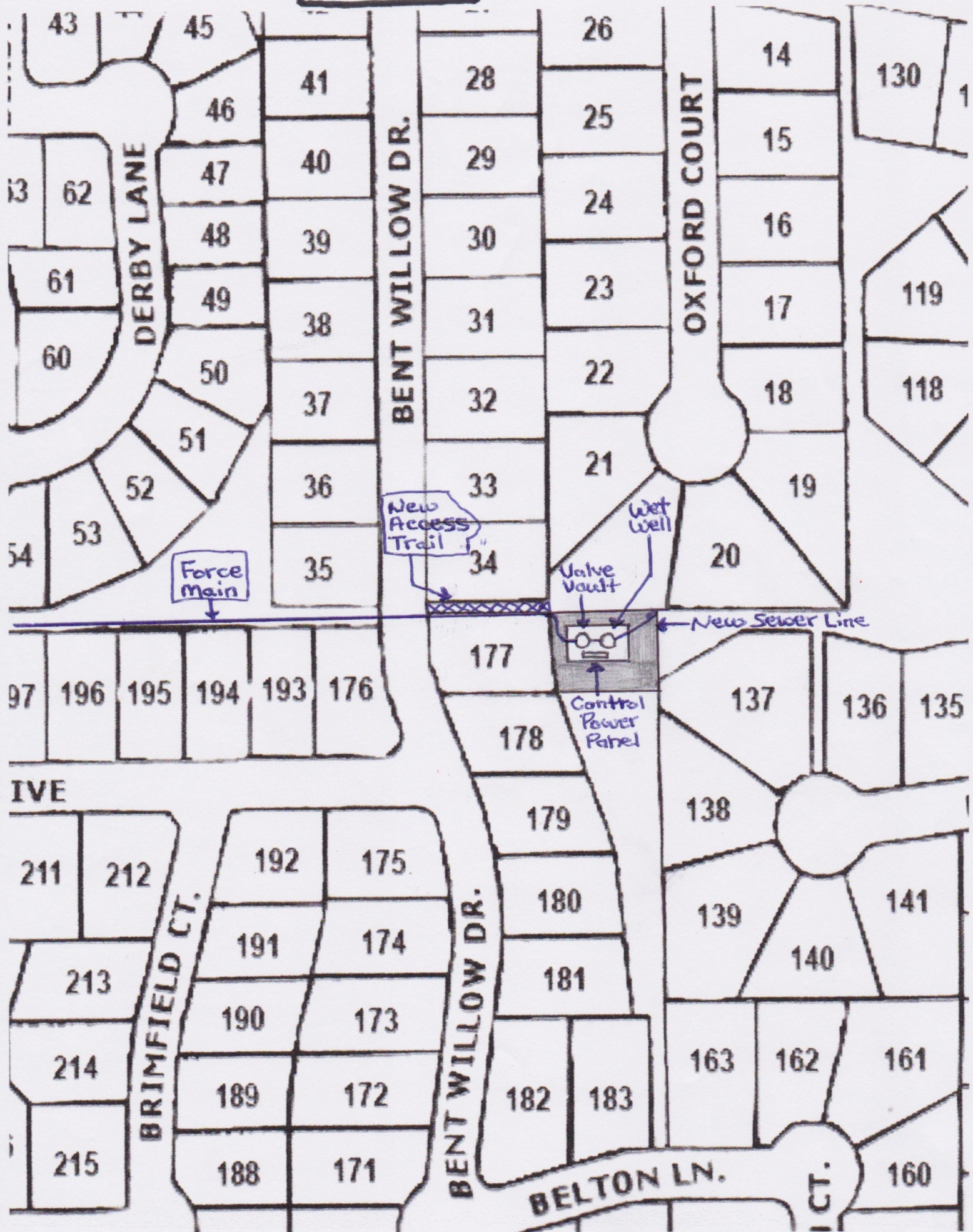
Figure B - Maintenance trucks will need routine access to this lift station facility, so City Utilities plans to install an access road coming off Bent Willow Drive and going between KDCA lot 34 and lot 177.

- 5 - **“Land Swap” proposal offered by the KDCA Board of Directors ...** the parcel of City-owned land (located south of the Oxford Court cul-de-sac) in exchange for an equal portion of the KDCA common area land parcel that is located near Maysville Road just behind Villa lot 73 and Villa lot 74. **See Figure C.**
- 6 - **We have been told that City Utilities is considering KDCA’s “land swap” proposal;** but first, they need to evaluate the condition of the buried/inactivated sewage lift station. In March 2019, City Utilities hired Apex Consulting to do a topographical survey of the entire area starting at the site of the abandoned lift station and going west across Maysville Road to Mowhawa Drive in the Lake Forest subdivision. In July 2019, City Utilities began excavating extensively in the area in order to locate and visualize the existing 20-inch force main, so they can evaluate the condition of this structure as well as the buried sewage lift station. **See Figure C.**



Tonkel Road Lift Station – Typical lift station layout

Figure B



COMMUNITY OF KENSINGTON DOWNS

Figure C

